



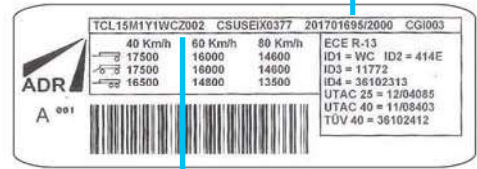
**Indicazioni per la lettura della targhetta identificativa del prodotto**

How to read the identification plate  
 Erklärung lieber die Achsenplakette  
 Pour lire la plaquette d'identification

Fabbricante  
 Manufacturer  
 Hersteller  
 Fabricant

Lotto di produzione  
 Production lot  
 Produktionsanteil  
 Lot de production

ADR	AA1UA1VCN001	202721005
ATIVA	25 40 60 105KM	
-b	JKG10000 9000 8500 7500	
○L	JKG12000 10500 9500 9000	
-L	JKG 9000 8500 7500 7000	
412S	13880 10000 9000	
	AL199.1 TDB0609 TDB0609	



Axle	A	A1	UA	1	VC	N001
Teknoax	TA	13H	1T	1	VC	N001
Steering axle	C7	A1	UA	1	VC	N001
Steering axle Teknoax	TC7	13H	1T	1	VC	N001

**Codice ADR**  
 ADR code  
 ADR Art.-Nr.  
 ADR code

**A**  
 Asse - Axle - Achse - Essieu

**S**  
 Semiassa - Stubaxle  
 Achsstummel - Demi essieu

**B..., C...**  
 Asse sterzante - Steering axle  
 Lenkachse - Essieu suiveur

**T**  
 Teknoax

Attacco ruota - P.C.D.  
 Radanschluss - Fixation de roue

**B4** or **B** = 4 holes 62/95  
**F4** or **4** = 4 holes 58/98  
**G4** or **A** = 4 holes 60/100  
**T4** or **C** = 4 holes 84/130  
**05** or **5** = 5 holes 94/140  
**G5** or **G** = 5 holes 66/112  
**06** or **6** = 6 holes 160/205  
**08** or **8** = 8 holes 220/275  
**10** or **1** = 10 holes 280/335  
**1R** or **R** = 10 holes 175.8/225

Codice corpo asse - Beam type code  
 Achskoerperbezeichnung - Code du corps d'essieu

